



1 SOUTH ELEVATION
1/8" = 1'-0"



2 WEST ELEVATION
1/8" = 1'-0"

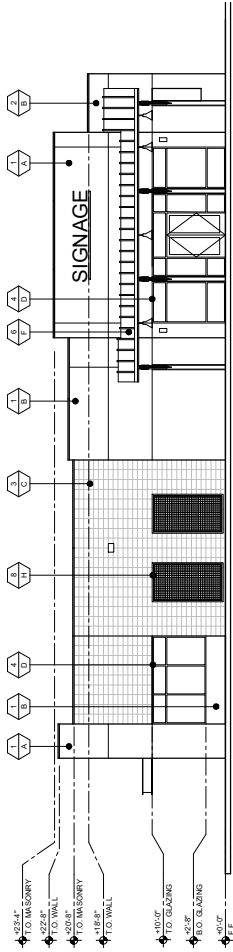


3 NORTH ELEVATION
1/8" = 1'-0"

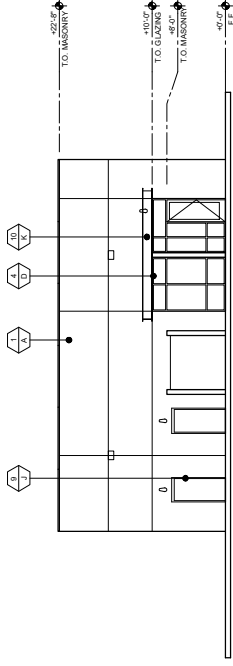


4 EAST ELEVATION
1/8" = 1'-0"

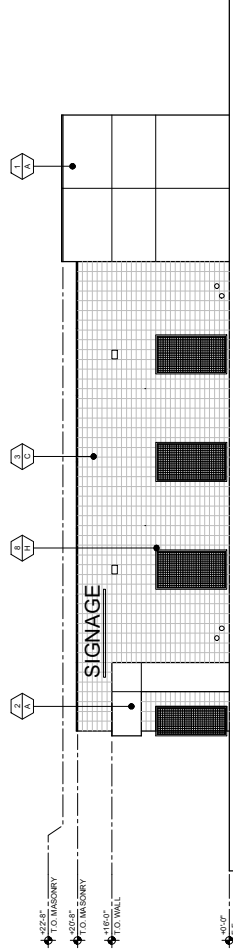
COLOR / MATERIAL SCHEDULE						
MATERIAL			COLOR / FINISH			
SYMBOL			SYMBOL	COLOR NAME	NUMBER	MANUFACTURER
1	1 COAT STUCCO OVER MASONRY WALL		A	MACADAMIA	SW 6142	SHERWIN WILLIAMS
2	1 COAT STUCCO OVER MTL STUD		B	ROYCROFT SUEDE	SW 2842	SHERWIN WILLIAMS
3	MASONRY WALL		C	RED ROCK	-	MESASTONE
4	STOREFRONT		D	STD. DARK BRONZE	AB-1	ARCADIA
5	SIGNBAR		E	CLEAR ALUMINUM	AC-1	ARCADIA
6	METAL ROOFING		F	BOND ACRYLIC	-	WESTERN STATES
7	TONGUE & GROOVE 2X6 R/S DECKING		G	CLEAR SEALER	-	-
8	STEEL TRELLIS		H	UNFINISHED	-	-
9	H/M DOOR		J	PAINT TO MATCH	-	-
10	STRUCTURAL STEEL		K	ENDURING BRONZE	SW7069	SHERWIN WILLIAMS



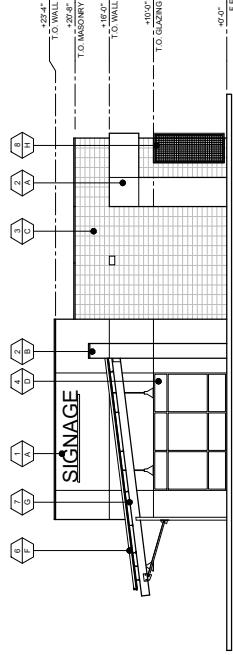
1 SOUTH ELEVATION
100' x 120'



2 WEST ELEVATION
100' x 120'



3 NORTH ELEVATION
100' x 120'



4 EAST ELEVATION
100' x 120'

SYMBOL	MATERIAL	COLOR / MATERIAL SCHEDULE		SYMBOL	COLOR NAME	NUMBER	MANUFACTURER
		MATERIAL	COLOR / FINISH				
1	1 COAT STUCCO OVER MASONRY WALL	A	MACADAMIA	60	642	SHERWIN WILLIAMS	
2	1 COAT STUCCO OVER MET. STUD	B	ROYCROFT BUDE	60	2842	SHERWIN WILLIAMS	
3	MASONRY WALL	C	RED ROCK	-	-	MEBASTONE	
4	STONEFRONT	D	8TD, DARK BRONZE	AB-1	-	ARCADIA	
5	SIGNBAR	E	CLEAR ALUMINUM	AC-1	-	ARCADIA	
6	METAL ROOFING	F	BOND ALPTLIC	-	-	WESTERN STATES	
7	TONGUE & GROOVE 2x6 R/S DECKING	G	CLEAR SEALER	-	-	-	
8	STEEL TRELLIS	H	UNFINISHED	-	-	-	
9	MET. DOOR	J	PAINT TO MATCH	-	-	-	
10	STRUCTURAL STEEL	K	ENCOURING BRONZE	507063	-	SHERWIN WILLIAMS	



LONGBOW
MARKETPLACE
3218 North Recker Road
Mesa, Arizona



PAD 1



Butler Design Group, Inc.
architects & planners

Case Number: PRS17-00505
2/16/2023
15:08:40



Site Plan and Design Review Narrative
Longbow Marketplace – Pad One of Phase 1B

DEVELOPMENT TEAM

Developer:

Kitchell Development
1707 E. Highland
Phoenix, AZ 85016
Contact: Brad Anderson

Architect:

Butler Design Group
5017 E. Washington St. Ste. 107
Phoenix, AZ 85034
Contact: Clay A Chiappini

Applicant:

Kitchell Development
1707 E. Highland
Phoenix, AZ 85016
Contact: Rob schramm

Landscape Architect:

Laskin and Associates, Inc.
67 East Weldon Avenue Suite 230
Phoenix, AZ 85012
Contact: Hardy A. Laskin

INTRODUCTION

This request seeks site plan and design review approvals to construct a 4,273 square foot free standing Pad Building, Pad One of Phase 1B as indicated on original Design Review approval documents was shown as a 5,000 square foot building. In addition to this DRC submittal we are also submitting for a Minor Site Plan Amendment due to square footage adjustment and a fully executed design for Hardscape and the building.

The completed Phase 1 of Longbow Marketplace is 9.1 acres of an overall 20 acre shopping center site in the Longbow Master Plan at the southwest corner of Recker Road and the Red Mountain Freeway.

The build out of the existing project includes a Sprouts Framers Market along with three Retail Shop Buildings and all related site work. The site was designed to allow for three Freestanding Pad Buildings to be placed around the site perimeter. These Pads were identified on the Approved master Plans as Pads 1, 2 and 3.

This submittal is for the approval on a Freestanding Building to be located on Pad 1

DESIGN & SITE PLAN REVIEW
CONCEPTUAL SITE PLAN and BUILDING ARCHITECTURE

Significant effort has been put into the site and architectural design of the center. The enclosed site plan illustrates the care given to building locations and size; vehicular circulation, parking locations, attractive landscaping and strong pedestrian connections this has been continued with the development of Pad 1.

The architectural character of the center, including this Pad 1 Building, conveys a design sensitivity and attention to detailing in keeping with the Longbow Business Park & Golf Club Design Guidelines.

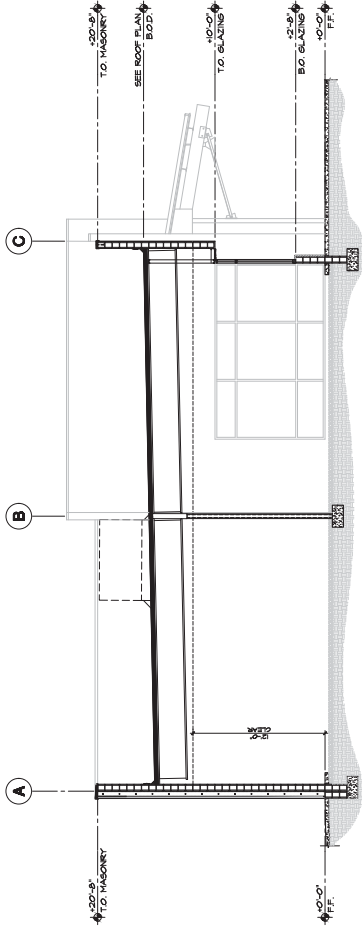
The Project reflects an eclectic regional design theme incorporating contemporary forms and elements is being used to create an inviting pedestrian-friendly shopping environment. Raw, natural building material from sand blasted concrete block, steel I-beam and channels and standing seam metal roofing are combined with warm natural stucco finishes of desert hues and heavy timber elements to create an engaging and inviting experience for those visiting the center.

Accents elements of steel trellises and wall articulation add another layer of visual and textural interest to the experience.

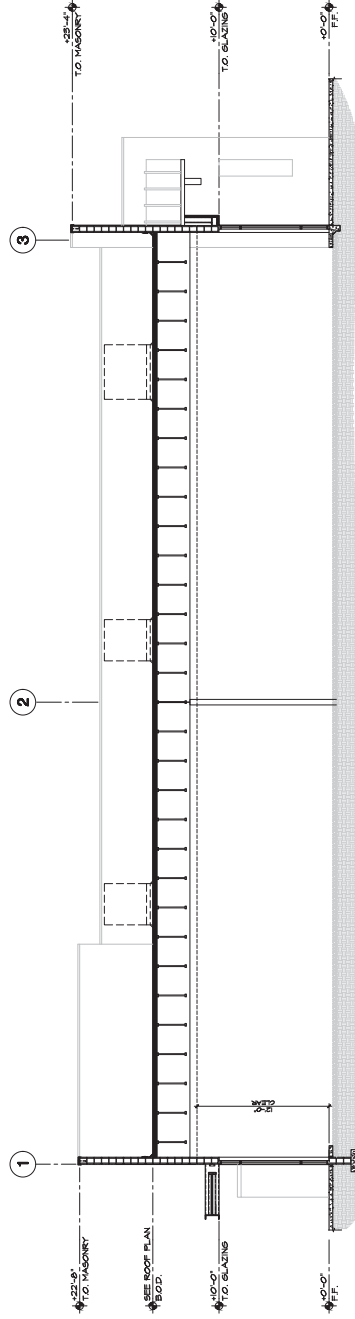
Deep projecting roof overhangs, awnings elements provide plentiful shading for pedestrians culminating with playful shade sail elements over the corner patio at the primary corner of the development and the people gathering places at the intersection of the pedestrian pathways off Recker Road and Longbow Parkway. Existing Pedestrian amenities, enhanced walkways and landscaping further blend with and compliment the surrounding desert environment encompassing and are continued with the addition of Pad 1.

The design of this Pad 1 building has been designed to use all the same materials and massing as was used on original project.

No additional site improvements will be provide with the exception the surround area of the Pad which included hardscape and landscaping.



1 BUILDING SECTION
2 1/4" = 1'-0"



2 BUILDING SECTION
2 1/4" = 1'-0"



LONGBOW
MARKETPLACE
3218 North Recker Road
Mesa, Arizona



PAD 1

Case Number: PRS17-00505
2018-01-23
15089-A00



Butler Design Group, Inc.
architects & planners

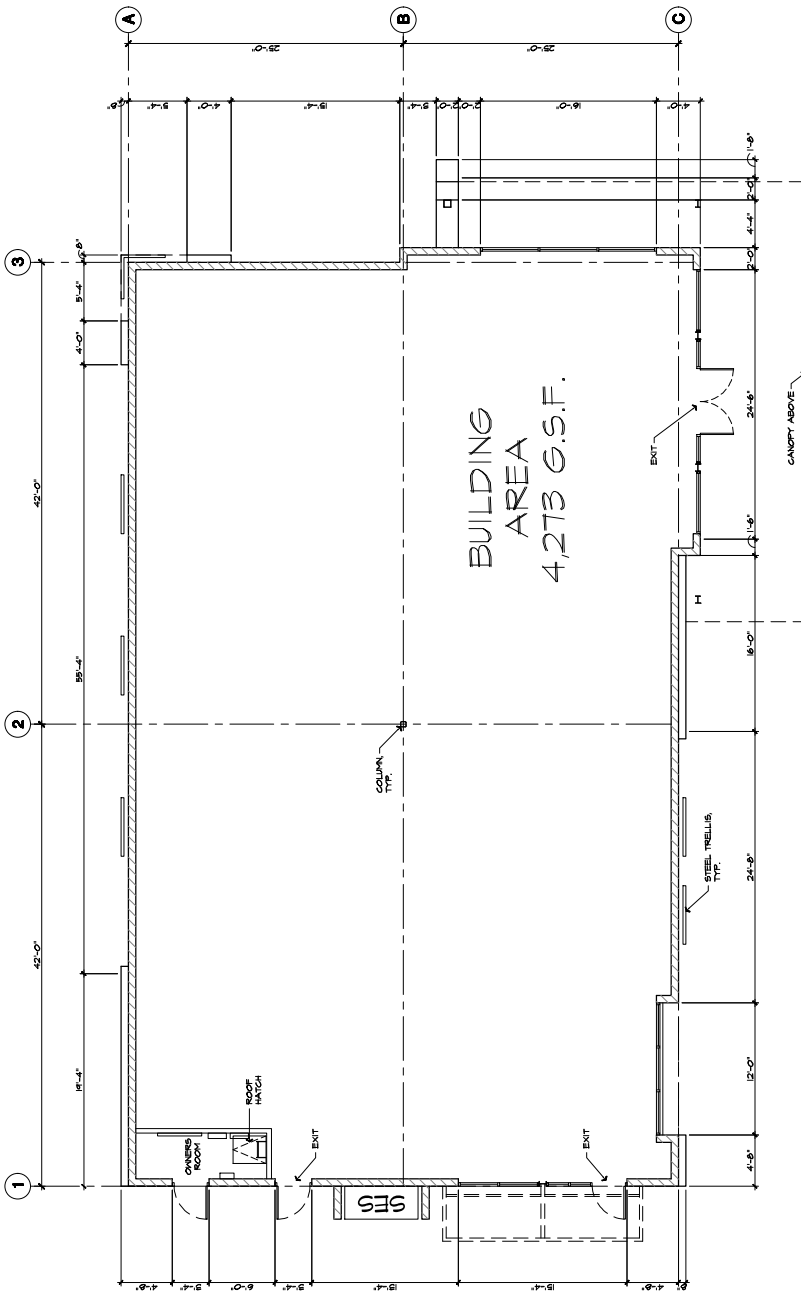
Case Number: PRS17-00505
2018-01-23
150889-000



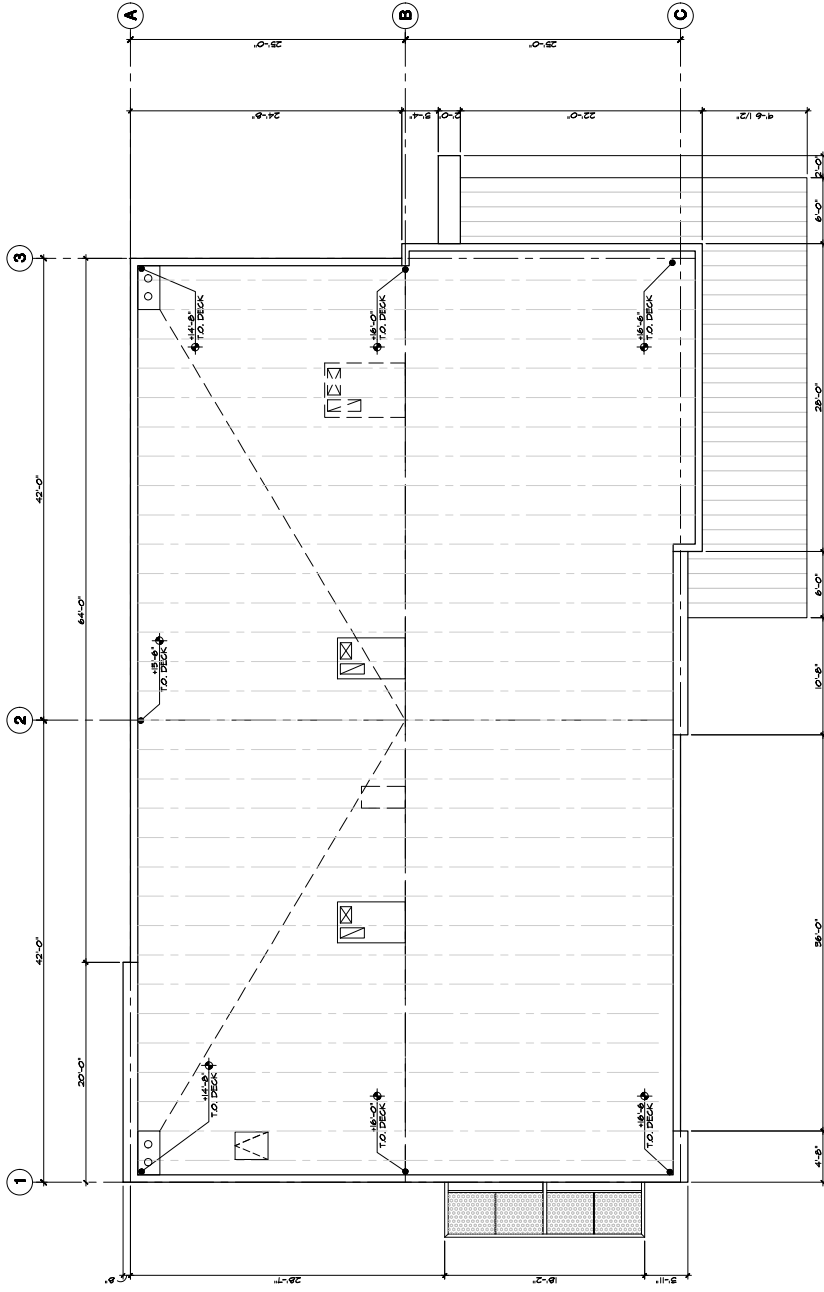
PAD 1



LONGBOW
MARKET PLACE
3218 North Recker Road
Mesa, Arizona



1 FLOOR PLAN
3/17/18



1 ROOF PLAN
3/8" = 1'-0"

LONGBOW

MARKETPLACE
3218 North Recker Road
Mesa, Arizona



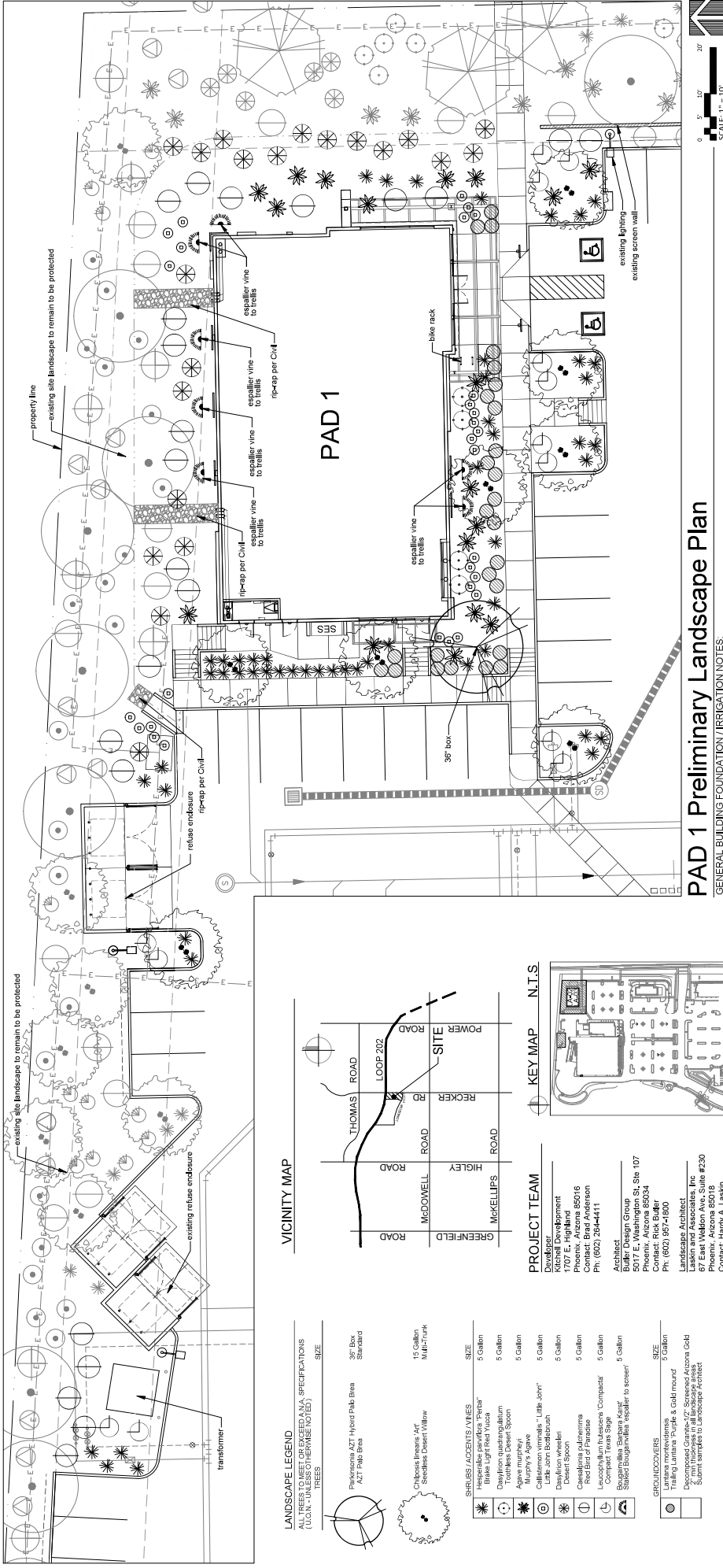
PAD 1



Case Number: PDS 17-00265
2018.01.23
16089.400

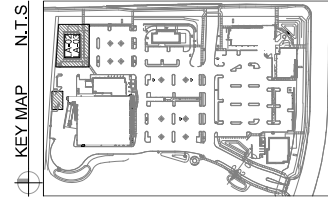
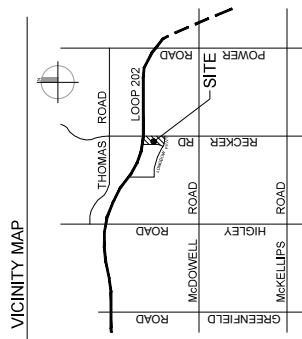


Butler Design Group, Inc.
architects & planners



PAD 1 Preliminary Landscape Plan

GENERAL BUILDING FOUNDATION / IRRIGATION NOTES:
 1. ALL IRRIGATION SYSTEMS SHALL BE DESIGNED AND INSTALLED IN ACCORDANCE WITH THE IRRIGATION CONTRACT DOCUMENTS.
 2. IRRIGATION SYSTEMS SHALL BE DESIGNED AND INSTALLED IN ACCORDANCE WITH THE IRRIGATION CONTRACT DOCUMENTS.
 3. IRRIGATION SYSTEMS SHALL BE DESIGNED AND INSTALLED IN ACCORDANCE WITH THE IRRIGATION CONTRACT DOCUMENTS.
 4. IRRIGATION SYSTEMS SHALL BE DESIGNED AND INSTALLED IN ACCORDANCE WITH THE IRRIGATION CONTRACT DOCUMENTS.
 5. IRRIGATION SYSTEMS SHALL BE DESIGNED AND INSTALLED IN ACCORDANCE WITH THE IRRIGATION CONTRACT DOCUMENTS.



LANDSCAPE LEGEND
 ALL TREES TO MEET OR EXCEED A.A. SPECIFICATIONS (U.S.G.N. - UNLESS OTHERWISE NOTED)

TREES	SIZE
Palmetto AZT Hybrid Palm Brea	36" Box Standard
AZT Palm Brea	
Cholla Imperial 'M'	15 Gallon Multi-Turnk
Shoestring Desert Willow	

SHRUBS / CASSETTES / VINES	SIZE
Brake Light Red Yucca	3 Gallon
Daylily garden gladiolus	5 Gallon
Toothless Desert Spoon	5 Gallon
Murphy's Sage	5 Gallon
Callisotum vine 'Lil' John'	5 Gallon
Daylily vine	5 Gallon
Castilleja adobe	5 Gallon
Red Bird of Paradise	5 Gallon
Leucophyllum 'Luscious Compact'	5 Gallon
Compact Texas Sage	5 Gallon
Shield Bougainvillea vespertine to screen	5 Gallon

GROUNDCOVERS	SIZE
Lantana montevidensis	5 Gallon
Trailing Lantana Purple & Gold mound	
Decorative Granite-17' Screened Arizona Gold	
Submit samples to Landscape Architect	

PROJECT TEAM

Developer
 Kitchell Development
 Phoenix, Arizona 85016
 Contact: Brad Anderson
 Ph: (602) 264-4411

Architect
 Butler Design Group
 5017 E. Washington St. Ste 107
 Phoenix, Arizona 85034
 Ph: (602) 957-1900

Landscape Architect
 Laska and Associates, Inc
 67 East Weldon Ave, Suite #230
 Phoenix, Arizona 85018
 Contact: Harry A. Laska
 Harry@Laskadesign.com



LONGBOW MARKETPLACE

PAD 1 Longbow Parkway & Recker Road
 Mesa, Arizona



PL-01 of 1

PROJECT DATA

Zoning: LC
 APN#: 141-41-009
 Gross Site Area: 493,348 S.F. (11.3 AC)
 Phase Site Area: 433,525 S.F. (10.0 AC)
 Net Site Area: 395,662 S.F. (9.1 AC)
 Building Footprint: 634,312 S.F.
 Coverage: 16.1%
 Proposed Building Height: 38 feet max.

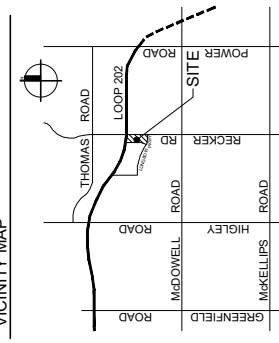
Parking Required

Major (30,000 S.F.)
 (General Retail 30,000/375 S.F.) 80 Spaces
 P1 = 4,273 S.F. (Medical/Dental 4,273/200 S.F.) 22 Spaces
 P2 = 5,000 S.F. (Retail 5,000/75 S.F.) 67 Spaces
 P3 = 3,500 S.F. (Restaurant/Wide Area 3,200/100 S.F.) 32 Spaces
 Shops A & B = 15,012 S.F. (Retail 15,012/375 S.F.) 69 Spaces
 (60% General Retail 9,007/375 S.F.)
 Shops C = 6,050 S.F. (Restaurant 2,000/75 S.F.) 27 Spaces
 (General Retail 4,050/375 S.F.)
 Shops A.C. P3 = 4,000 S.F. (Retail Area) 11 Spaces
 (General Retail 4,000/250 S.F.)
 Total Parking Required: 353 Spaces
 Minimum Allowed (125% of Req.): 441 Spaces
 Parking Provided: 402 Spaces
 ADA Parking Required: 8 Spaces
 ADA Parking Provided: 18 Spaces
 Parking Ratio: 6.4 / 1,000 S.F.

PROJECT TEAM

Developer: High Group
 1707 E. Highland
 Phoenix, Arizona 85016
 Contact: Brad Anderson
 Ph: (602) 264-4411
 Architect: Butler Design Group
 15099 North Recker Road
 Phoenix, Arizona 85034
 Contact: Clay Chappani
 Ph: (602) 957-1800

VICINITY MAP



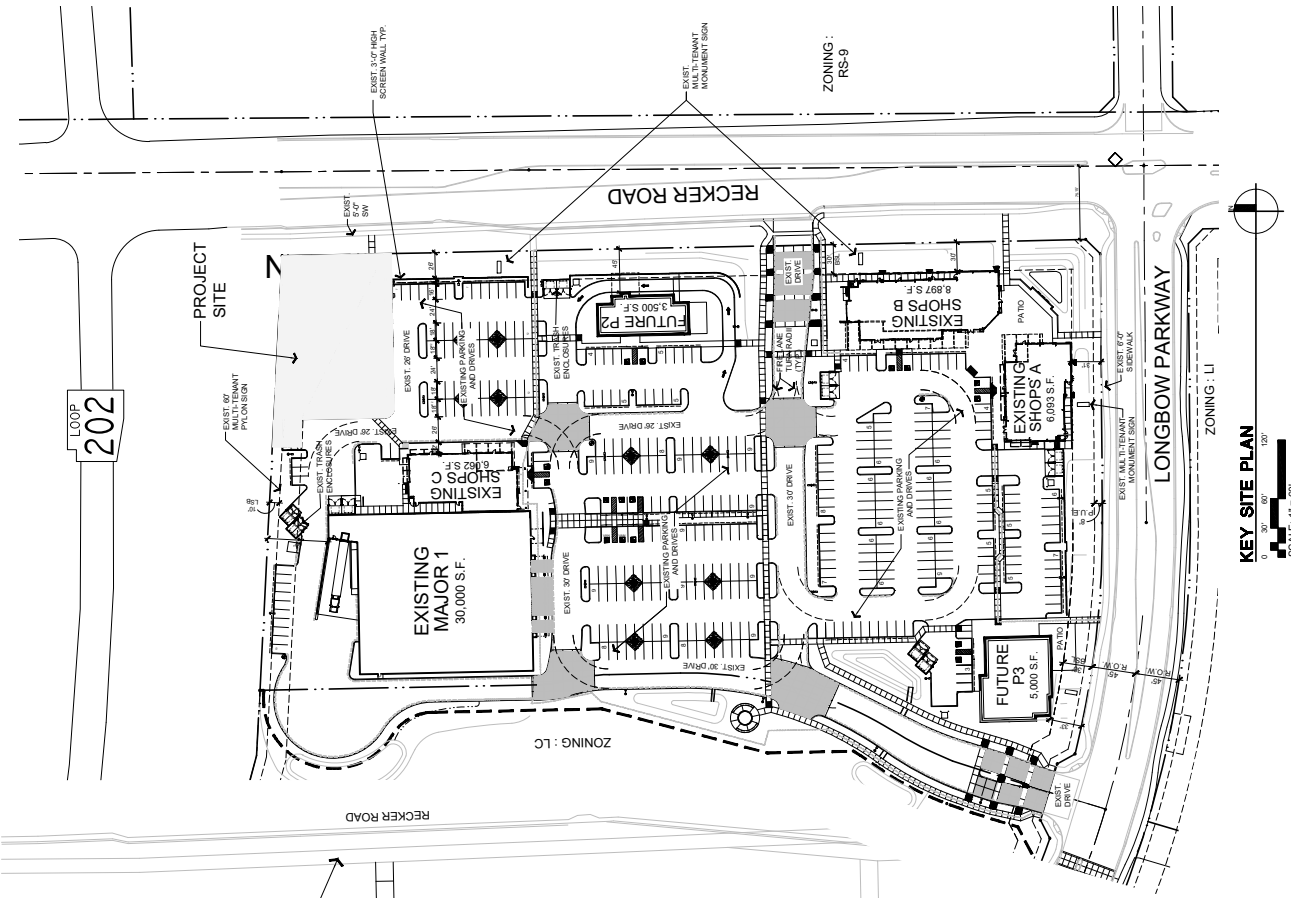
Case Number: PR17-00505
 2018-01-23
 15099-400_Lease_Site



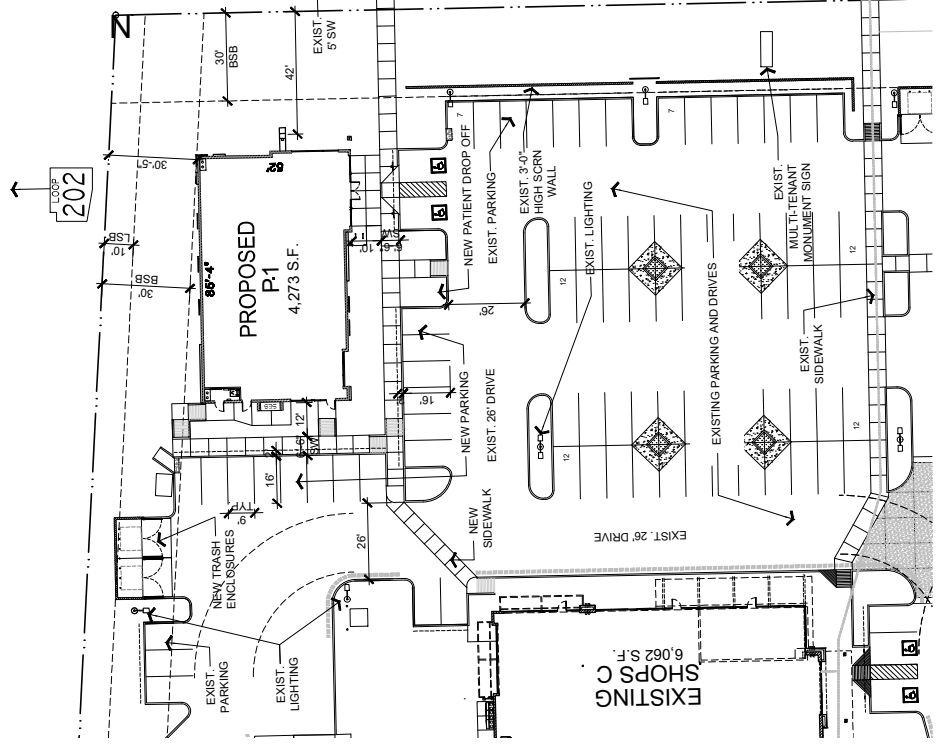
Butler Design Group, Inc.
 architects & planners



ENGINE 3007820



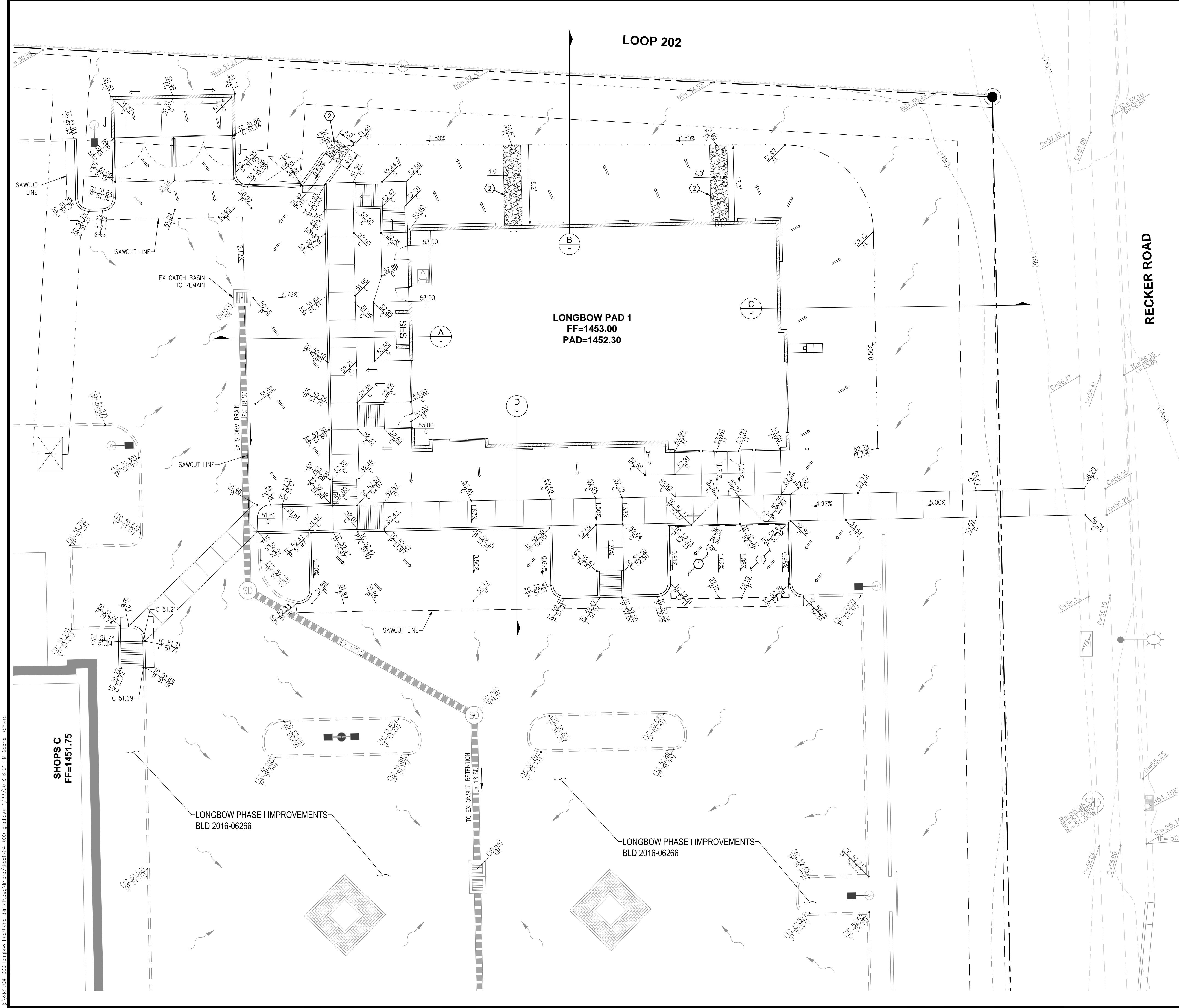
KEY SITE PLAN
 0 30' 60' 120'
 SCALE: 1" = 60'



P1 SITE PLAN
 0 30' 60' 120'
 SCALE: 1" = 20'

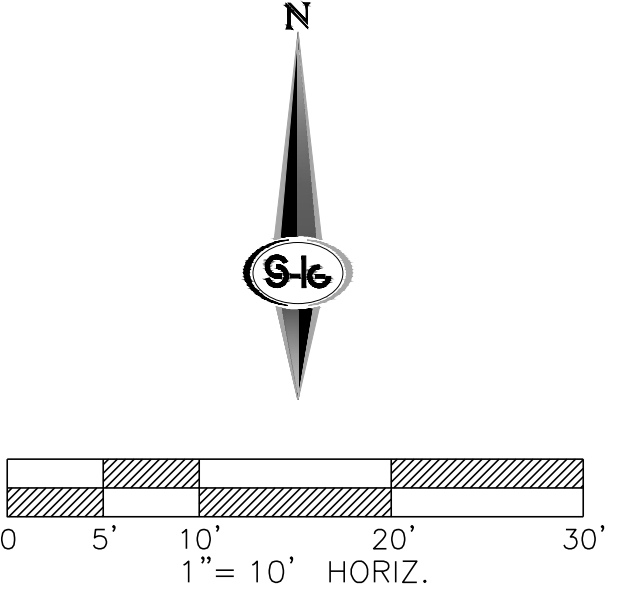
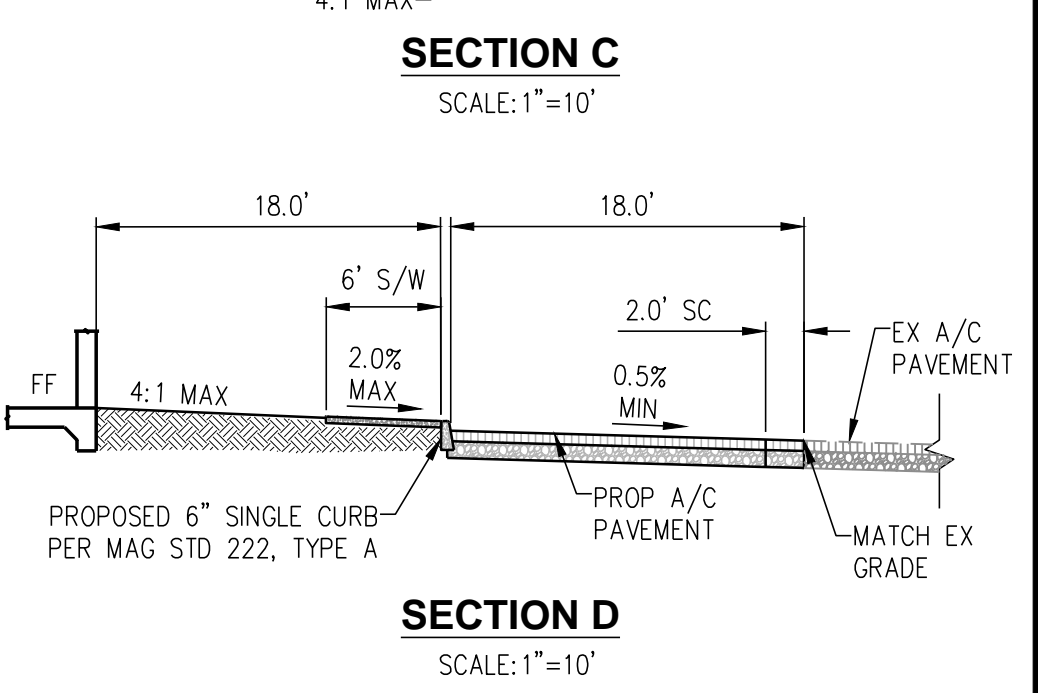
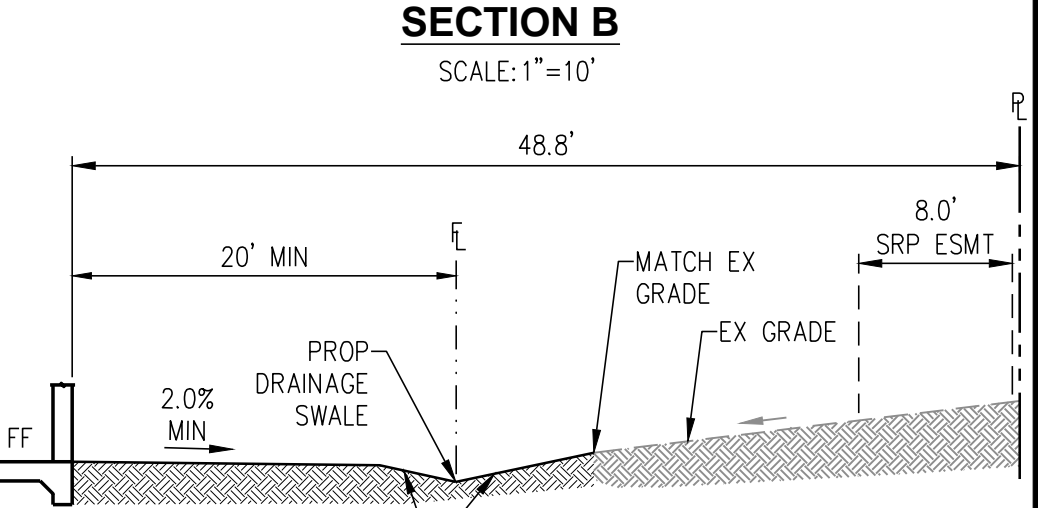
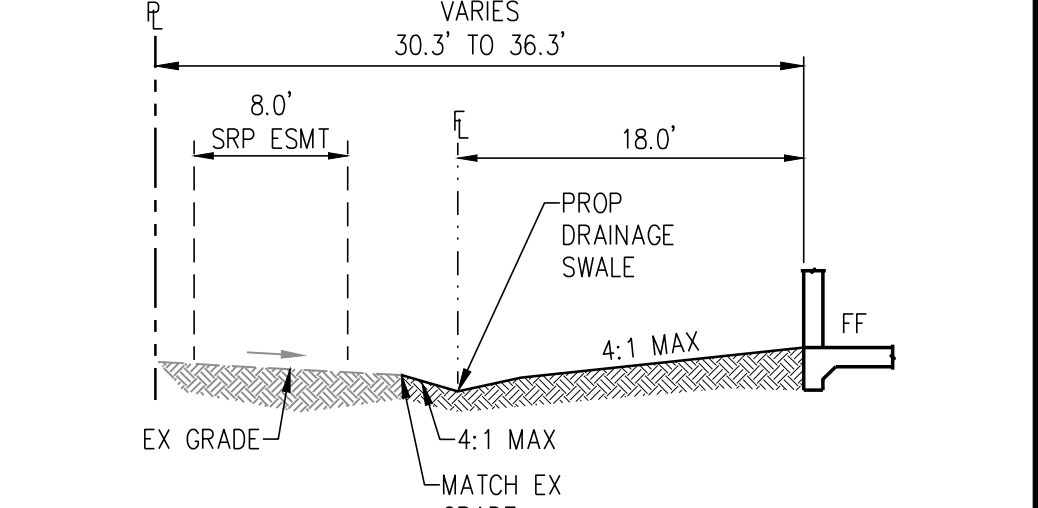
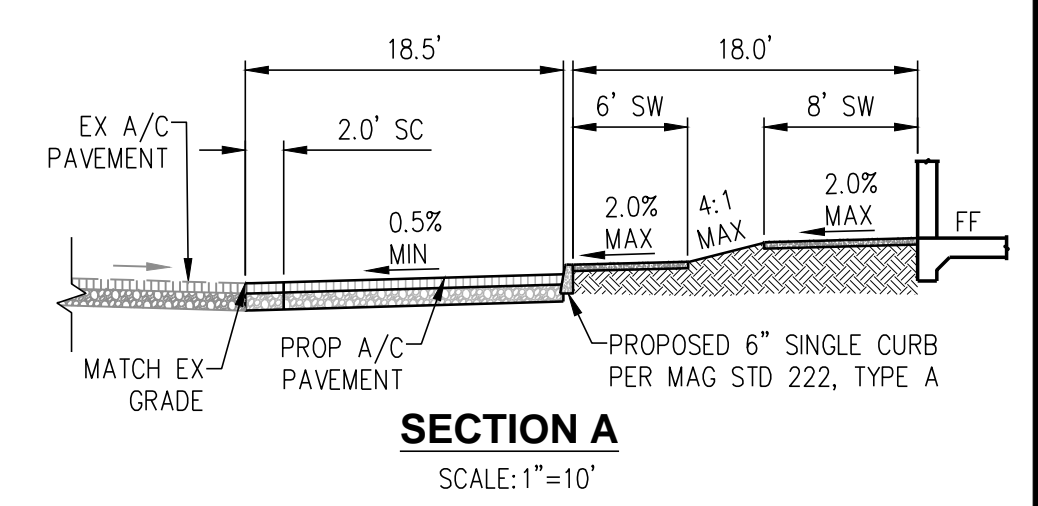
LONGBOW MARKETPLACE

3218 North Recker Road
 Mesa, Arizona



- GRADING CONSTRUCTION NOTES:**
- ① PAVEMENT GRADES NOT EXCEED 2 PERCENT IN ANY DIRECTION WITHIN ACCESSIBLE PARKING AREA OR ACROSS ACCESSIBLE ROUTE.
 - ② INSTALL 1" DEEP RIP-RAP OVER FILTER FABRIC, D50=6", LENGTH AND WIDTH PER PLAN

NOTE:
RETENTION PROVIDED WITH PHASE I IMPROVEMENTS BLD 2016-06266



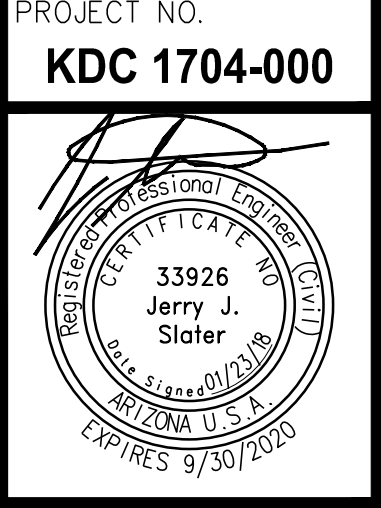
NO.	DESCRIPTION	DATE	BY	APP.

MESA, ARIZONA

KITCHELL DEVELOPMENT COMPANY
LONGBOW MARKETPLACE PAD 1
GRADING PLAN

DATE: 01/23/2018
DRAFTER: IZR
DESIGNER: GGR
CHECKED: PEL

PROJECT NO.
KDC 1704-000



I:\Mesa\1704-000\Longbow\Interfinal.dwg 1/23/2018 8:01 PM Gabriel Romero

Contact Arizona 811 at least two full working days before you begin excavation
ARIZONA811
Call 811 or click Arizona811.com

The beautiful and simple California Series LED Pedestrian Luminaires depict not only the California lifestyle, but the architecture of California as well. This ornamental piece is a delightful sight to see and a great model to illuminate any urban, rural, retail, or park, or campus setting.

The different caps and shades depict different California styles and a touch of California's historic Spanish mission era. The California Series is the perfect selection to combine both design and efficiency in light performance. Designed, tooled, manufactured and assembled in the USA.



Arm Mount



Post Top Smooth



STAR POWER™ OPTICAL SYSTEM

The Star Power™ reflector is an excellent system which provides great value and performance.


LED WATTAGE CHART

	16L	32L	48L	64L	80L
350 milliamps	18w	33w	51w	66w	85w
530 milliamps	28w	54w	80w	102w	128w
700 milliamps	36w	71w	104w	136w	168w
	SIZE S		SIZE 1		SIZE 2

Type:

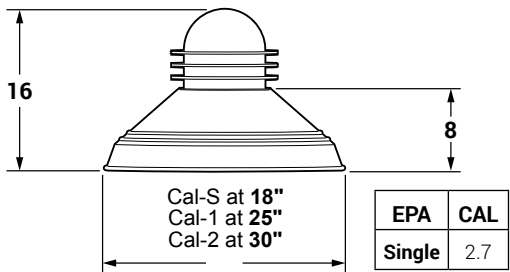
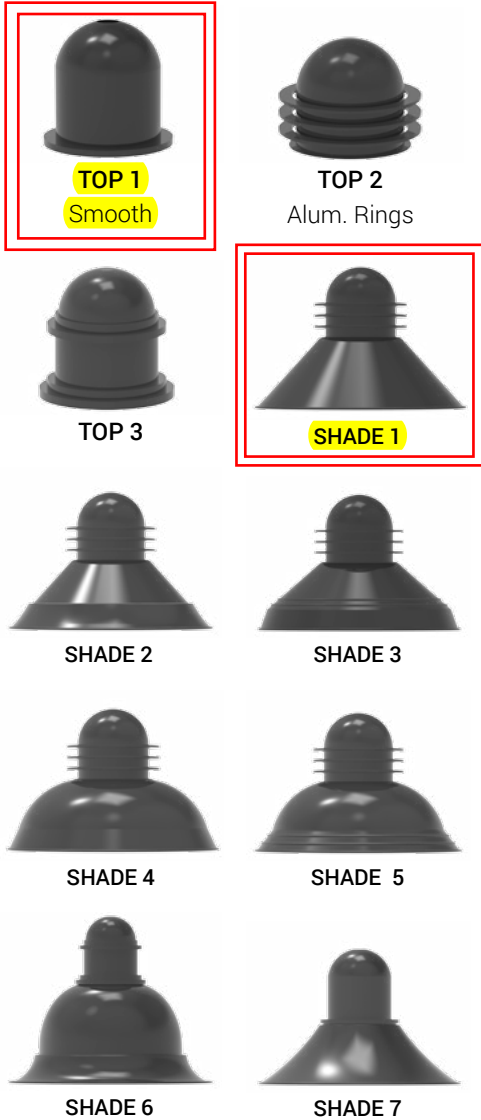
Cat #	Top/Shade	Light Dist.	# of LEDs	Milliamps	Kelvin	Volts	Mount	Color	Shields	Options
California Small 18" Diameter (CAL-S) <i>*For 16L (Shade 6 Only)</i>	Top 1 (TP1)	Type 2 (T2)	16 (16L)	350 (35)	3000K (30K)	120-277 (UNV)	Post Top (PT)	Bronze (BRZ)	House Side Shield (HSS)	Bird Spikes (BS)
	Top 2 (TP2)	Type 3 (T3)	32 (32L) 48 (48L)	530 (53)	4000K (40K)	347-480 (HV)	Arm Mount (AM)	White (WHT)		Marine Grade Finish (MGF)
California 1 25" Diameter (CAL-1) <i>*64L Max</i>	Top 3 (TP3)	Type 4 (T4)	64 (64L) 80 (80L)	700 (7)	5500K (55K)			Silver (SVR)		Photocell (PC) <i>*Universal Voltage 120-277</i>
	Shade 1 (S1)	Type 5 (T5)						Hunter Green (HGN)		FSP-211 with Motion Sensor (Universal Voltage) (FSP-8) *For 8' + Below (FSP-20) *For 9' to 20' (FSP-40) *For 21' to 40'
California 2 30" Diameter (CAL-2) <i>*For 80L (Shade 6 Only)</i>	Shade 2 (S2)							Black (BLK)		
	Shade 3 (S3)							Graphite (GPH)		Surge Protector (10K)
	Shade 4 (S4)							Grey (GRY)		Acrylic Rings (AR)
	Shade 5 (S5)							Custom (CS)		Rotated Optics Rotate Optic Right (ROR)
	Shade 6 (S6) Shade 7 (S7)									Rotate Optic Left (ROL)

PRODUCT SPECIFICATIONS

Housing: Heavy Duty Marine Grade Cast and Spun Aluminum with 7 shade options and 3 cap options.
LED: Luxeon Series by Lumileds
Optics: Star Power Optical System; Type 2, 3, 4 + 5 full cutoff
Watts: 18-168
Electrical: UL 1598 Listed 

Driver: By Philips Advance
Kelvin: 3000, 4000, or 5500
Finish: 5 Millimeters Powder Coat
Hardware: Stainless Steel
Warranty: Standard Warranty is 5 years for Driver and LEDs

PRODUCT DIMENSIONS



CALIFORNIA LUMEN DATA CHART									
PART NUMBER	T2 LUMENS	T2 LM/W	T3 LUMENS	T3 LM/W	T4 LUMENS	T4 LM/W	T5 LUMENS	T5 LM/W	Watts
CAL-S-16L-35-30K	2250	125	2214	123	2268	126	2106	117	18
CAL-S-16L-35-40K	2430	135	2376	132	2448	136	2268	126	18
CAL-S-16L-35-55K	2628	146	2574	143	2664	148	2466	137	18
CAL-S-16L-53-30K	2835	105	2781	103	2862	106	2646	98	27
CAL-S-16L-53-40K	3051	113	2997	111	3078	114	2835	105	27
CAL-S-16L-53-55K	3294	122	3240	120	3348	124	3105	115	27
CAL-S-16L-7-30K	3465	99	3395	97	3500	100	3220	92	35
CAL-S-16L-7-40K	3710	106	3640	104	3745	107	3745	107	35
CAL-S-16L-7-55K	3990	114	3955	113	4095	117	4095	117	35
CAL-1-32L-35-30K	4059	123	3993	121	4092	124	3795	115	33
CAL-1-32L-35-40K	4389	133	4290	130	4422	134	4092	124	33
CAL-1-32L-35-55K	4752	144	4653	141	4818	146	4455	135	33
CAL-1-32L-53-30K	5562	103	5454	101	5616	104	5184	96	54
CAL-1-32L-53-40K	5994	111	5886	109	6048	112	5562	103	54
CAL-1-32L-53-55K	6480	120	6372	118	6588	122	6102	113	54
CAL-1-32L-7-30K	6887	97	6745	95	6958	98	6390	90	71
CAL-1-32L-7-40K	7384	104	7242	102	7455	105	7455	105	71
CAL-1-32L-7-55K	7952	112	7881	111	8165	115	8165	115	71
CAL-1-48L-35-30K	6120	120	6018	118	6171	121	5712	112	51
CAL-1-48L-35-40K	6630	130	6477	127	6681	131	6171	121	51
CAL-1-48L-35-55K	7191	141	7038	138	7293	143	6732	132	51
CAL-1-48L-53-30K	7600	100	7448	98	7676	101	7068	93	76
CAL-1-48L-53-40K	8208	108	8056	106	8284	109	7600	100	76
CAL-1-48L-53-55K	8892	117	8740	115	9044	119	8360	110	76
CAL-1-48L-7-30K	9776	94	9568	92	9880	95	9048	87	104
CAL-1-48L-7-40K	10504	101	10296	99	10608	102	10608	102	104
CAL-1-48L-7-55K	11336	109	11232	108	11648	112	11648	112	104
CAL-1-64L-35-30K	7722	117	7590	115	7788	118	7194	109	66
CAL-1-64L-35-40K	8382	127	8184	124	8448	128	7788	118	66
CAL-1-64L-35-55K	9108	138	8910	135	9240	140	8514	129	66
CAL-1-64L-53-30K	9894	97	9690	95	9996	98	9180	90	102
CAL-1-64L-53-40K	10710	105	10506	103	10812	106	9894	97	102
CAL-1-64L-53-55K	11628	114	11424	112	11832	116	10914	107	102
CAL-1-64L-7-30K	3276	91	3204	89	3312	92	11424	84	136
CAL-1-64L-7-40K	13328	98	13056	96	13464	99	13464	99	136
CAL-1-64L-7-55K	14416	106	14280	105	14824	109	14824	109	136
CAL-2-80L-35-30K	9775	115	9605	113	9860	116	9095	107	85
CAL-2-80L-35-40K	10625	125	10370	122	10710	126	9860	116	85
CAL-2-80L-35-55K	11560	136	11305	133	11730	138	10795	127	85
CAL-2-80L-53-30K	12160	95	11904	93	12288	96	11264	88	128
CAL-2-80L-53-40K	13184	103	12928	101	13312	104	12160	95	128
CAL-2-80L-53-55K	14336	112	14080	110	14592	114	13440	105	128
CAL-2-80L-7-30K	14952	89	14616	87	15120	90	13776	82	168
CAL-2-80L-7-40K	16128	96	15792	94	16296	97	16296	97	168
CAL-2-80L-7-55K	17472	104	17304	103	17976	107	17976	107	168
CAL-2-80L-7-40K	16128	96	15792	94	16296	97	16296	97	168
CAL-2-80L-7-55K	17472	104	17304	103	17976	107	17976	107	168



DesignLights Consortium (DLC) qualified Product. Some configurations of this product family may not be DesignLights Consortium (DLC) listed, please refer to the DLC qualified products list to confirm listed configurations. <http://www.designlights.org>



19500 S. Rancho Way Ste. 105, Rancho Dominguez CA 90220
 Call Us Today 310-341-2037

nslighting.com

LIGHTING INNOVATIONS

GALLERY SERIES



DECORATIVE STYLED DOWN LIGHT



SternbergLighting

ESTABLISHED 1923 / EMPLOYEE OWNED



GALLERY **BF**

Base Fixture



GALLERY **BT**

Blank Top



GALLERY **CW**

Custom Window Designs



GALLERY **GR**

Glow Rings

GALLERY **GW**

Glow Window

THIS FIXTURE

elements™

Choose from a variety of windows, lenses, rings and shades to build your custom Gallery series fixture.*

LENSES



Flat Glass



Frosted Flat Glass



Sag Glass



Frosted Sag Glass



Opal White Acrylic

RINGS



Glow

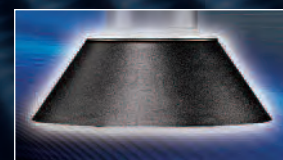


Solid

SHADES



Flared



Straight

THIS SHADE

WINDOWS



Blank Top



Custom



Glow



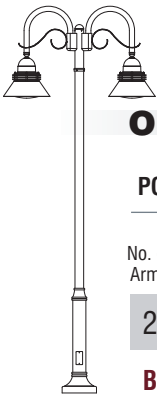
Horizontal

* See spec sheets for the entire range of available options.

Model: Gallery 1970-S SG BTGR
Finish: OWG (Old World Gray)
Lens: SG (Sag Glass)
Shown with HS-V Hangstraight

THIS POLE CONFIG.
w/ TRSL - STRAIGHT
SEE NEXT PAGE





ORDERING INFORMATION

POST & ARM FIXTURES EXAMPLE

No. of Arms	Arm Mounted Fixture Fixture/Lens/ Postarm	Center Post Top Fixture	Post	Post Cap	Light Source Fixture Watts/Type/Volts	Optics	Options	Finish
2	1970-S SG GR/ONPT		3212P4		100MHP120		HS/MHP100/MED	UBKT
B	A, A1, B	A	(See Post Spec Sheet)		C	D	E, F	G

A. Fixture

A1. Lenses

- FG** Flat Glass
- SG** Sag Glass
- FFG** Frosted Flat Glass
- FSG** Frosted Sag Glass
- OPL⁵** Opal White Acrylic

24" W 16 3/8" H	24" W 22 1/4" H	24" W 20" H	24" W 22 1/4" H	24" W 22 1/4" H	24" W 22 1/4" H	24" W 22 1/4" H	24" W 20" H	24" W 25 1/4" H
1970-S FG BF	1970-S SG BT	1970-F FG CW	1970-S SG GR	1970-S FG GW	1970-S SG HW	1970-F FG BTR	1970-S OPL GTS	

B. Mounting Styles

Fixture Types

- BF** - Basic Fixture
- BT** - Blank Top
- CW** - Custom Window
- GR** - Glow Rings
- GW** - Glow Window
- HW** - Horizontal Window
- BTR** - Blank Top Solid Rings
- GTS** - Glow Top Solid Rings
- F** - Flared Shade
- S** - Straight Shade

ARMS - POST MOUNTED (PM)	POST TOP (PT)	WALL BRACKETS (WB)
<p>ON* PT/WB</p>	<p>OG* PM/WB</p>	<p>OJ* PM/WB</p>
<p>TRSL* PM/WB</p>		

*Shown with optional HS (Hangstraight). More arms available, see spec sheet.

C. Light Sources

- HPS** High Pressure Sodium
- MHP** Metal Halide Pulse Start
- PLT** Compact Fluorescent
- INCAND** Incandescent
- QL** Induction

BALLASTS³	<ul style="list-style-type: none"> • 50HPS¹ • 70HPS • 100HPS • 250HPS • 400HPS 	<ul style="list-style-type: none"> • 50MHP⁴ • 70MHP^{3,4} • 100MHP⁴ • 150MHP³ • 175MHP³ 	<ul style="list-style-type: none"> • 200MHP • 250MHP • 320MHP • 350MHP • 400MHP 	<ul style="list-style-type: none"> • 39MHPPT • 26PLT • 32PLT • 42PLT • 57PLT 	<ul style="list-style-type: none"> • 70PLT • 60PLH • 85PLH • 120PLH • INCAND 	<ul style="list-style-type: none"> • QL55⁵ • QL85⁵ • QL165⁵
LAMPS²	<ul style="list-style-type: none"> • HPS50/MED • HPS70/MED • HPS100/MED • HPS150/MED • HPS250/MOG/ED18 • HPS400/MOG/ED18 	<ul style="list-style-type: none"> • MHP50/MED • MHP70/MED • MHP100/MED • MHP150/MED • MHP175/MOG/ED8³ • MHP200/MOG/T15 	<ul style="list-style-type: none"> • MHP250/MOG/ED28 • MHP320/MOG/ED28 • MHP350/MOG/ED28 • MHP400/MOG/ED28 • MHP39/T6 • MHP70/T6 	<ul style="list-style-type: none"> • MHP150/T6 • PSMH175/MED • PSMH250/MOG • PSMH400/MOG • PLT26 • PLT32 	<ul style="list-style-type: none"> • PLT42 • PLT/57/Gx24Q • PLT/70/Gx24Q • PLH/60/2GB • PLH/85/2GB 	

D. Optics



E. Optional Photocell

- PEC Photocell-Electronic 120-277 Volt

F. Optional Fusing

- FHD Dual Fuse and Holder
208, 240, 480 Volt
- FHS Single Fuse and Holder
120, 277 Volt

G. Finish

UBKT Urban Black Textured	UBK Urban Black Matte
UBT Urban Bronze Textured	UB Urban Bronze Matte
ULBT Urban Light Bronze Textured	ULB Urban Light Bronze Matte
USLT Urban Silver Textured	USL Urban Silver Matte
UWHT Urban White Textured	UWH Urban White Matte
UCHS Urban Champagne Satin Smooth	

NOTES: ¹ 35HPS is 120 volt only. ² Medium base sockets standard with ballasts up to 150 watts. ³ Available with T6 lamp. ⁴ Metal halide systems are pulse start. ⁵ Consult factory for specification details. See website for complete specifications and IES files.

PAINT COLORS

Written Coatings Specification

Stage I: All products to be coated shall receive a 96 second Alkaline cleaner application followed by a 48 second fresh water rinse at ambient temperature.

Stage II: Shall be a 60 second Phosphoric Acid 4% solution treatment with a Fluoride accelerant followed by a 48 second reverse osmosis water rinse at ambient temperature. The rinse will be followed by a high pressure air spray to remove all moisture from the product.

Stage III: Shall be a 48 second Non-Chrome Polymer sealer application.

Stage IV: Shall start with 16 minutes in a drying oven at 400 degrees.

Stage V: Shall be an electro-static application of polyester powder in a downdraft spray booth and applied by articulated robotic arm sprayer and over sprayed by an application technician. Polyester powder over spray shall be recoverable and reusable.

Stage VI: Shall be 25 minutes oven curing at 450 degrees to harden the powder finish and create final appearance and adhesion to the substrate. Curing shall be followed by 9.5 minutes in a cooling tunnel to prepare for un-racking.

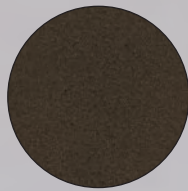
Pre-Treatment and curing processes shall be followed by quality checks for adhesion using a cross-hatch test and for proper curing by means of a solvent rub test. Coatings process shall meet or exceed AAMA-2604-05 standard.



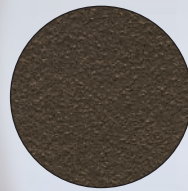
UBK
Black



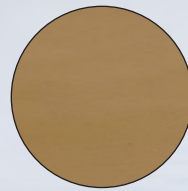
UBKT
Black
Textured



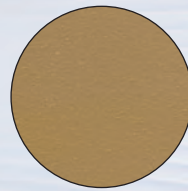
UB
Bronze



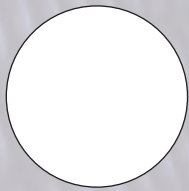
UBT
Bronze
Textured



ULBT
Light
Bronze



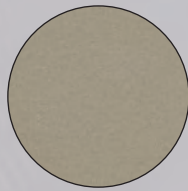
ULB
Light Bronze
Textured



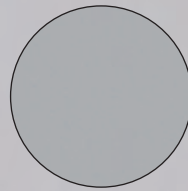
UWH
White



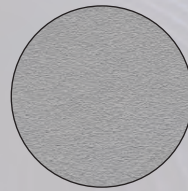
UWHT
White
Textured



UCHS
Champagne
Satin
Smooth



USL
Silver



USLT
Silver
Textured

Colors are approximate and may have a slight variation.

Construction:

- Aluminum housing and chassis
- Clear tempered glass lens

Light Source:

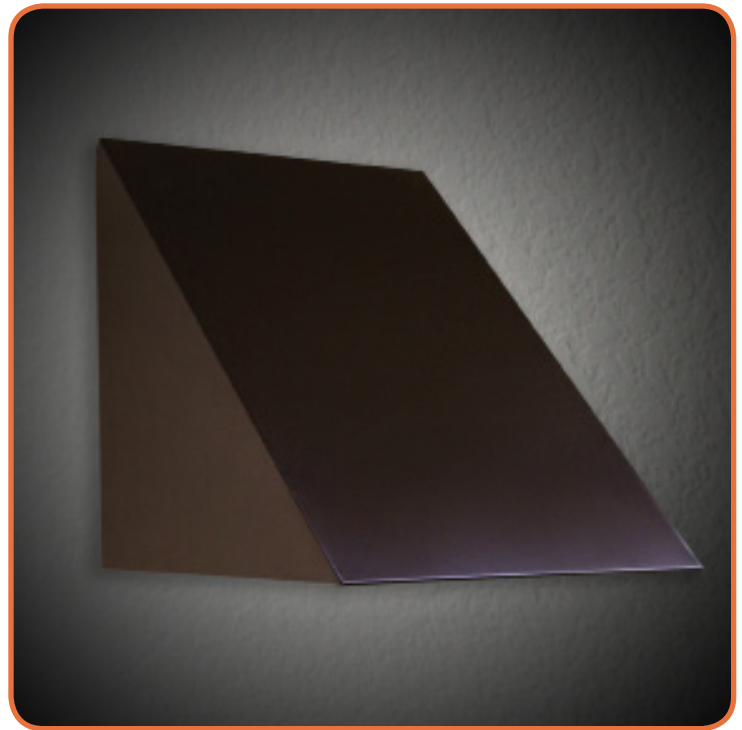
- LED
- Dimming (0 - 10v) to 10% **Included**

Notes:

- Integral mounting plate; keyhole slots left and right
- All aluminum construction (painted finish only)
- Optional battery backup
- Dark Sky compliant
- UL and CUL listed WET location
- LED Components
 - OSRAM Distributed Array
 - CRI > 80
 - 18w - 2,000 Lumens
 - 36w - 4,000 Lumens
 - Dimming (10% or 1%)
 - Osram 25w LED Driver
 - 5-Year Warranty on LED Components



Type:	
Job Name:	



WALL

CEILING

PENDANT

OUTDOOR

BVWW-13

Height - 13 1/2"

Width - 12"

Depth - 13 3/4"



ORDERING INFORMATION

Example: BVWW-13-LED-U-36W-3-B2-CEG

--	--	--	--	--	--	--	--

Model	Cage	Voltage	Lamping	Kelvin	Finish	Diffuser	Options
BVWW-13-LED		U 120 - 277	18w LED / 2000lm (111 lm per watt) 36w LED / 4000lm (111 lm per watt)	2 3000K 3 3500K 4 4000K	B1 Satin Black Z1 Satin Bronze Z3 Text Bronze Optional (See Price List) W1 Yolk W2 Gloss White W3 Text White B2 Text Black T4 Shimmer Gray M13 Anod Silver T6 Pewter W13 Pearl Beige	CEG Clear Tempered Glass	DIM LED dimming driver (0 - 10v) Dimming to 10% (Included) DIM1 LED dimming driver (0 - 10v) Dimming to 1% (See Price List) Battery Backup Options BB05 5 Watts (585lm) for 90-Minutes



TRZP-LED

Construction:

- Heavy gauge aluminum reflector and die cast aluminum yolk
- Lens jar is frosted tempered glass

Light Source:

- LED

Notes:

- Mounts to 3" round pole – fitter part of yolk assembly
- Fixture dimensions include fitter
- Underside of reflector "hat" is gloss white
- Integral Driver slips in 3" round pole - Requires minimum 10" depth in pole
- See supplemental spec sheet on website for pole options
- Dark Sky compliant
- UL and CUL listed WET location
 - OSRAM Distributed Array
 - CRI > 80
 - Osram Power Supply
 - 5-Year Warranty on LED Components



Type:	
Job Name:	



TRZP-21

Height - 16 1/2"

Width - 21"

Depth - 21"

WALL

CEILING

PENDANT

OUTDOOR

ORDERING INFORMATION

Example: TRZP-LED-21-U-45-3-B1

--	--	--	--	--	--	--	--

Model	Cage	Voltage	Lamping	Kelvin	Finish	Diffuser	Options
TRZP-21-LED		U 120 - 277	12w LED / 1240lm (103 lm per watt) 19w LED / 2220lm (117 lm per watt) 27w LED / 3300lm (122 lm per watt) 45w LED / 5000lm (111 lm per watt)	2 3000K 3 3500K 4 4000K	B1 Satin Black		Pole Options (see supplemental spec sheet on website and price list)



28435 Industry Drive., Valencia, California 91355
 West Coast Sales: 800-325-4448 / 661-257-0286 • fax 800-323-2346 / 661-257-0201
 East Coast Sales: 866-350-0991 • fax 866-490-5754
 www.lightwayind.com • sales@lightwayind.com

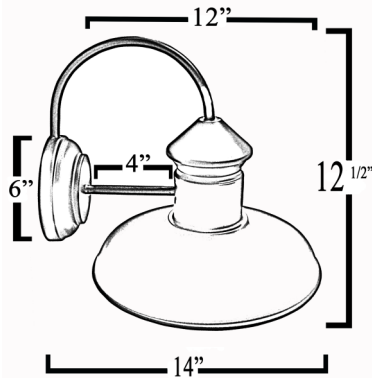




DATE	
PROJECT	
TYPE	
NOTE	
PREPARED BY	

CLA-3275

Small Architectural LED Area Light Fixture



The **CLA-3275** is a simple, yet elegant small architectural LED area light fixture that is suitable for wet locations. The **CLA-3275** is ideal for illuminating locations such as residential exteriors, walkways, perimeters, school campuses, industrial/commercial spaces, and any other location that is looking for an upgraded, vintage look. This fixture has a wide light distribution and is dark sky compliant. For the benefit of your investment, we have included a 10 year warranty.

FEATURES

- Energy Savings: Over 66% compared to HID light sources
- Improved lumen maintenance
- High efficient LED's
- Operating temperatures: -30°C ~ 60°C
- Driver: Constant current, 120-277v, 50/60Hz, 480v (Optional)
- Suitable for wet locations
- Dimming, occupancy sensors, photo cell and wireless controls capable (optional)
- Operating life: >60,000 hours

CONSTRUCTION

- Housing is heavy-duty die-cast aluminum
- Powder coat: bronze finish (standard), various colors available (custom)
- Opal acrylic lens (standard), and other lens options available
- Silicone gasket to prevent leakage and provide weather-tight protection
- Mounts to a standard wall mount 4-inch junction box

OPTIONS

- (OCC) Motion sensor
- (PC) Button photo cell
- (WC) Wireless controls
- (PG) Prismatic glass



MODEL #	INPUT POWER	LUMEN OUTPUT	SCOTOPIC	COLOR TEMP (CCT)	CRI	RATED LIFE (L70)	INPUT VOLTAGE	INPUT FREQUENCY	HID EQUIVALENT
CLA-3275-5CLED	7W	757	1,211	5000K	70+	>200,000	120-277V	50/60Hz	35w HPS
CLA-3275-10CLED	12W	1,376	2,201	5000K	70+	>200,000	120-277V	50/60Hz	50w HPS
CLA-3275-15CLED	20W	1,918	3,068	5000K	70+	>200,000	120-277V	50/60Hz	75w MH
CLA-3275-20CLED	25W	2,752	4,403	5000K	70+	>200,000	120-277V	50/60Hz	100w MH

Ordering Guide Example: CLA-3275-15LED-50-MV-BLK-EMR

CLA-3275				
MODEL	WATTS	COLOR TEMP	VOLTAGE	FINISH
CLA-3275	5W-5CLED	27-2700K	MV=120-277V 480-480V	STANDARD:
	10W-10CLED	30-3000K		BZ-BRONZE
	15W-15CLED	35-3500K	ADDITIONAL CHARGE:	GRY-GRAY
	20W-20CLED	40-4000K		BLK-BLACK
		50-5000K		WH-WHITE
		57-5700K		CUS-CUSTOM
		65-6500K		